

Sustainability Working Group Meeting

January 15, 2025





MC
2023

Agenda

- **Welcome and recap of meeting of December 4, 2024**
- **Review of PSAT tool**
- **Pathways to funding sustainability**
- **Sharing what we know**

Meeting Recap: Dec 4th 2024

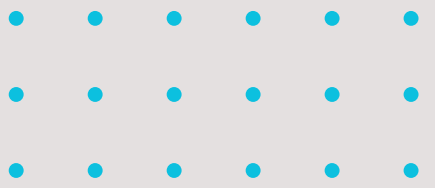
- 1. Introduction and Context**
- 2. Challenges in Sustainability**
- 3. Scaling and Dissemination**
- 4. Barriers to Sustainability**
- 5. Strategic Approaches to Funding**
- 6. Governmental and Policy Concerns**
- 7. Opportunities for Learning and Shared Experiences**

Meeting Recap: Dec 4th 2024



Whiteboard activity :

- **What comes to mind when you hear the words “sustainability” or “durability”?**
- **What aspects of your program would you like to see sustained after the PHAC funding ends?**



PSAT Tool

Environmental
Support

Program
Evaluation

Funding stability

Program Adaptation

Partnerships

Communications

Organizational
Capacity

Strategic Planning



Review of Previous Investment Sustainability Efforts

Review of Final Reports

Categories

Sustaining knowledge

Sustaining effective programs

scaling programs

sustaining collaboration

Sustaining impact

Sustaining Knowledge

(KM to stakeholders)

Examples:

- manuals
- training materials
- website
- journal articles
- toolkits

Sustaining Effective Programs

(integrating into existing orgs)

Examples:

- community of practice
- program embedded into CAPC
- additional funding obtained
- trained “master” trainers and all frontline staff

Scaling Programs

(expanding delivery to additional sites)

Examples:

- adapting for Indigenous partners and women who have immigrated
- expanding to different kinds of organizations

Sustaining Collaboration

(maintain productive working relationships)

Examples:

- community stakeholders engaging in implementation studies
- communities of practice

Sustaining Impact

(integrating programs into organizations and systems)

Examples:

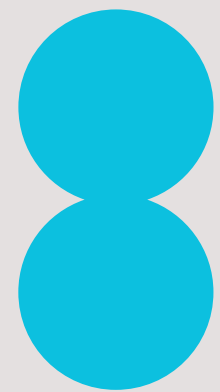
- community of practice
- training
- successfully embedded in organizations
- additional funding sought secured



Four Pathways for Sustainability

- 1. Research to Practice**
- 2. Advancing a Political Agenda**
- 3. Costing**
- 4. Private/Foundation Funding**

**Presented by Katreena
Scott**



Research to Practice



Advancing a Political Agenda

Gender-Based Violence & Newcomer Perspectives: Mapping of Canadian Policies (2010-2023)

Context

Newcomers, including immigrants, refugees, and asylum seekers, face unique challenges when experiencing gender based domestic violence (GBV) including:

- Pre- and post- migration trauma, strain, and stigma (1)
- Language barriers, lack of culturally appropriate services (1)
- Discrimination/racism when accessing service delivery (1)
- Limited knowledge on Canadian policies (1)
- Fear of deportation and limited knowledge on Human Rights
- Reluctant to report domestic violence to the police
- Social isolation from family and communities of support

Therefore, it is crucial to assess the impact of Canadian policies and initiatives on relevant to domestic violence on newcomer populations to understand how to provide effective supports services/resources.

Purpose

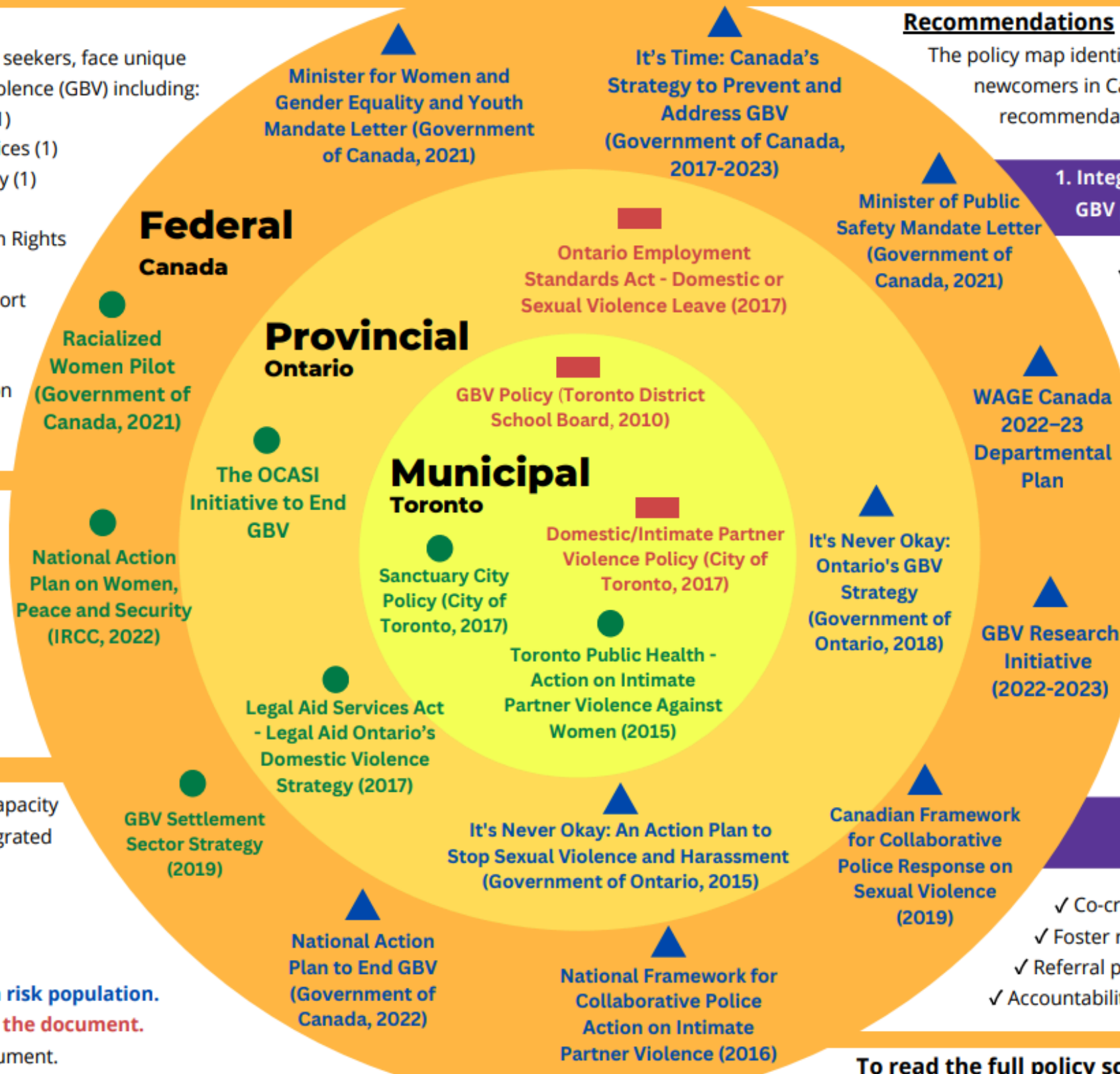
This visual map was developed from a policy scan (see link below) to capture Canadian GBV policies from 2010-2023, at a Municipal, Provincial, and Federal level.

This map will inform Access Alliance and other agencies, policy-makers, and researchers on the GBV policy landscape with newcomer perspectives.

Policies and initiatives are categorized according to the capacity at which newcomer perspectives were mentioned & integrated in each domestic violence policy and initiative:

- **Integrated:** Newcomers are the primary focus or are incorporated throughout the policy.
- ▲ **Limited:** Newcomers are mentioned in a limited capacity (1-2 times) or in one statement as a high risk population.
- **Not mentioned:** Does not mention newcomers in the document.

EXPLORE: Click on each policy to see original source document.



Recommendations

The policy map identifies key policy limitations in addressing GBV among newcomers in Canada. Based on existing evidence, the following recommendations represent priority areas for advocacy:

1. Integrate newcomer perspectives in existing and prospective GBV policies to ensure their unique experiences are addressed.

- ✓ Tailored cultural supports
- ✓ Unique barriers
- ✓ Lived experiences
- ✓ Adopt an intersectionality lens to account for newcomer identities
- ✓ Ensure newcomer perspective are consistently present
- ✓ Publicly accessible and feasible reporting in multiple languages

2. Make connections between immigration and GBV policies to mitigate contradicting legislation and address newcomer GBV issues holistically.

- ✓ Investigate how Immigration & Social Determinants of Health impact GBV policies
- ✓ E.g. Federal Acts - Immigration and Refugee Protection & National Housing Strategy
- ✓ E.g. Provincial Acts - Legal Aid, Ontario Works, Employment Standards, Residential Tenancies & Housing Services.
- ✓ Implement feedback and evaluation to measure effectiveness of policies impacting newcomers

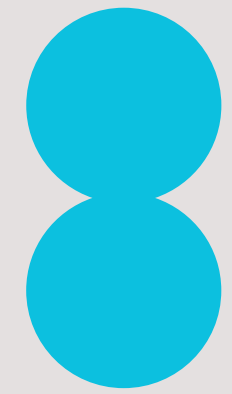
3. Strengthen cross-sectoral collaboration to address the complex challenges faced by newcomers.

- ✓ Co-creation of services and resources with newcomers
- ✓ Foster reliable inter-organizational connections (e.g. healthcare, legal)
- ✓ Referral pathways
- ✓ Identify strengths
- ✓ Knowledge exchange
- ✓ Accountability and skills building for service providers

To read the full policy scan report [Click Here](#)



Costing



Private/ Foundation Funding

SECTION 11 - Sustainability Plan

Instructions: Provide your project's sustainability plan below.

Note: PHAC provides time-limited, project-based funding. Therefore, time-limited project funding cannot be used to sustain the operation of organizations or to carry out ongoing core operational activities that must cease when funding ends. However, applicants are encouraged to include activities in their project that support the future sustainability of the project.

The following are examples of sustainability:

- Sustaining knowledge (e.g., mobilizing knowledge to stakeholders including the public, community collaborators and decision makers);
- Sustaining collaboration (e.g., creating and maintaining productive working relationships and maximizing the reach/benefits of addressing an issue with a diverse group of stakeholders);
- Sustaining impact (e.g., by integrating new programs or capacity into organizations and systems).

1. Provide an overview of your project's sustainability plan.

Assessment Criteria – Section 11 – Question 1

- The aspects of the project that will be sustained post-funding period, as well as the overall feasibility and potential impact of the proposed approach, are clearly described.

Thank you!

“See you February 12th”

