

THE KNOWLEDGE HUB: A Story

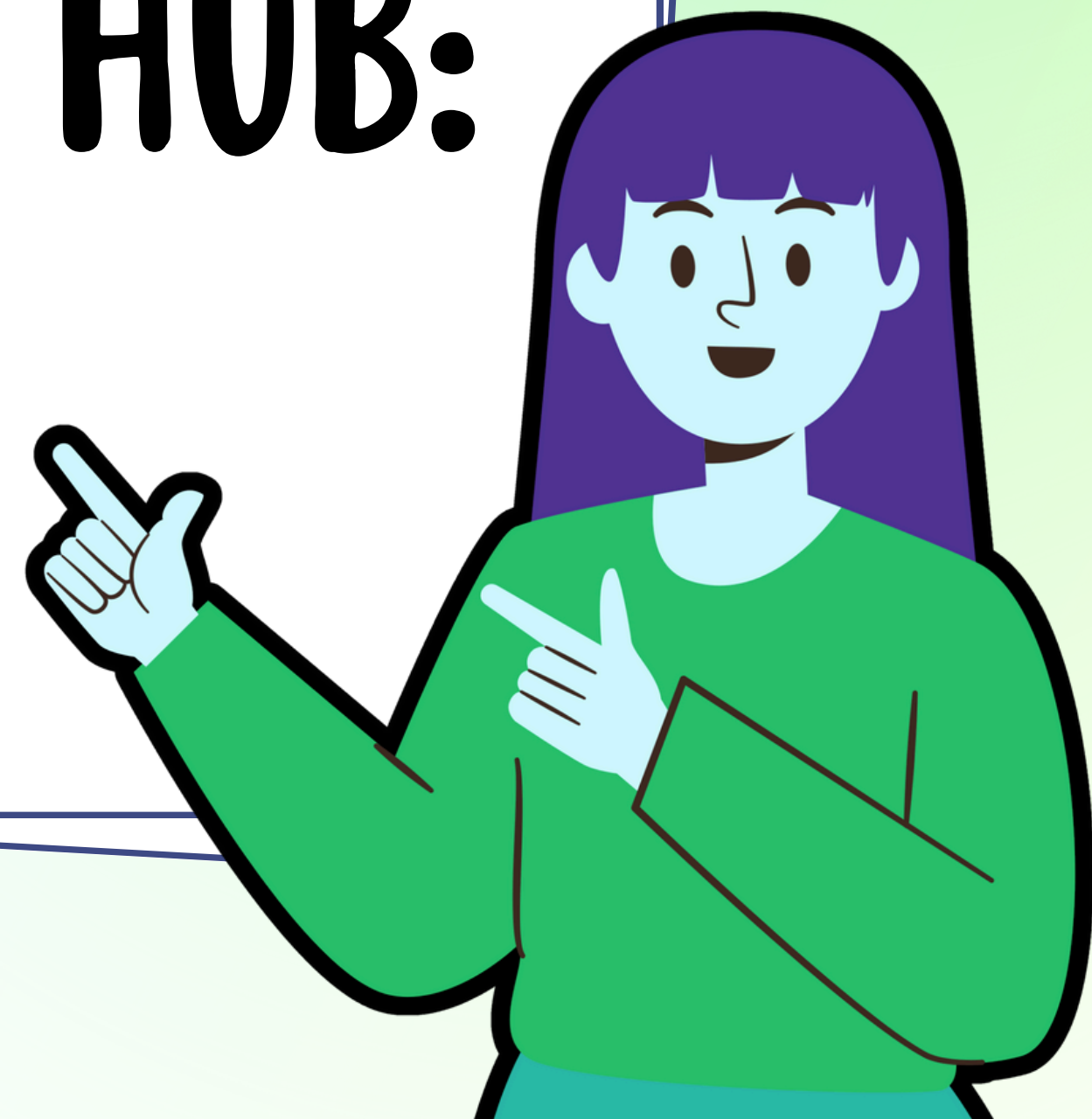


Financial contribution from



Public Health
Agency of Canada

Agence de la santé
publique du Canada



THE STORY BEGINS...

The story begins with a bustling room of research and service professionals from across Canada gathered for one of their annual in-person Knowledge Exchange events.

They are all connected through a bilingual Community of Practice (CoP) hosted by the Knowledge Hub (KH). The CoP brings together innovative trauma- and violence-informed health promotion projects funded through the Public Health Agency of Canada's (PHAC) investment on preventing and addressing family violence.



"We were constantly progressing from one meeting to another. People were more tightly connected from one meeting to the next."

"The positives and strengths... the connections with others in the field are wonderful... potentially none of these projects would have ever interacted with each other... I think that's wonderful, [it is] definitely expanding knowledge and skills and access"

MEET CAMERON



Meet CoP member Cameron whose work focuses on GBV service provision for newcomer survivors. The KH's resources and network have become an integral part of their professional growth, giving them the support and insights they need to make a difference in their work supporting diverse survivors of family violence.

Through the CoP, Cameron has gained access to webinars, reports, toolkits, and working group meetings that connect them with professionals across the country. They feel a sense of belonging and satisfaction, knowing they are part of a safe, inclusive network that is both welcoming and trauma-informed.

"I just find this a safe place to communicate and exchange... for me, this is very, very important that everyone has this space to express themselves and ask questions and reach out for help."

"The majority of people I work with, the clients and also even the coworkers are racialized. But then going to the bigger national forums and seeing the intentionality, seeing that there's so many other projects representing different groups in Canada... I really appreciate that."

"to be part of the community, this really helps us... when we watch the webinars we hear of other people's experiences... we're part of this great community that really helps us have enthusiasm and a willingness to go further with the project and that's really important because... we can really, start to feel isolated in this type of work."

MEET REMY

Meet Remy, a French-speaking CoP member located in Québec whose work focuses on promoting anti-violent behaviours in men. As a result of his engagement with the CoP, Remy has learned new trauma-informed approaches that he has been able to apply to his current research project. Hearing from others doing similar work has also helped him apply his knowledge about TVI approaches within his daily work and at his workplace where he has started sharing what he has learned with his colleagues.

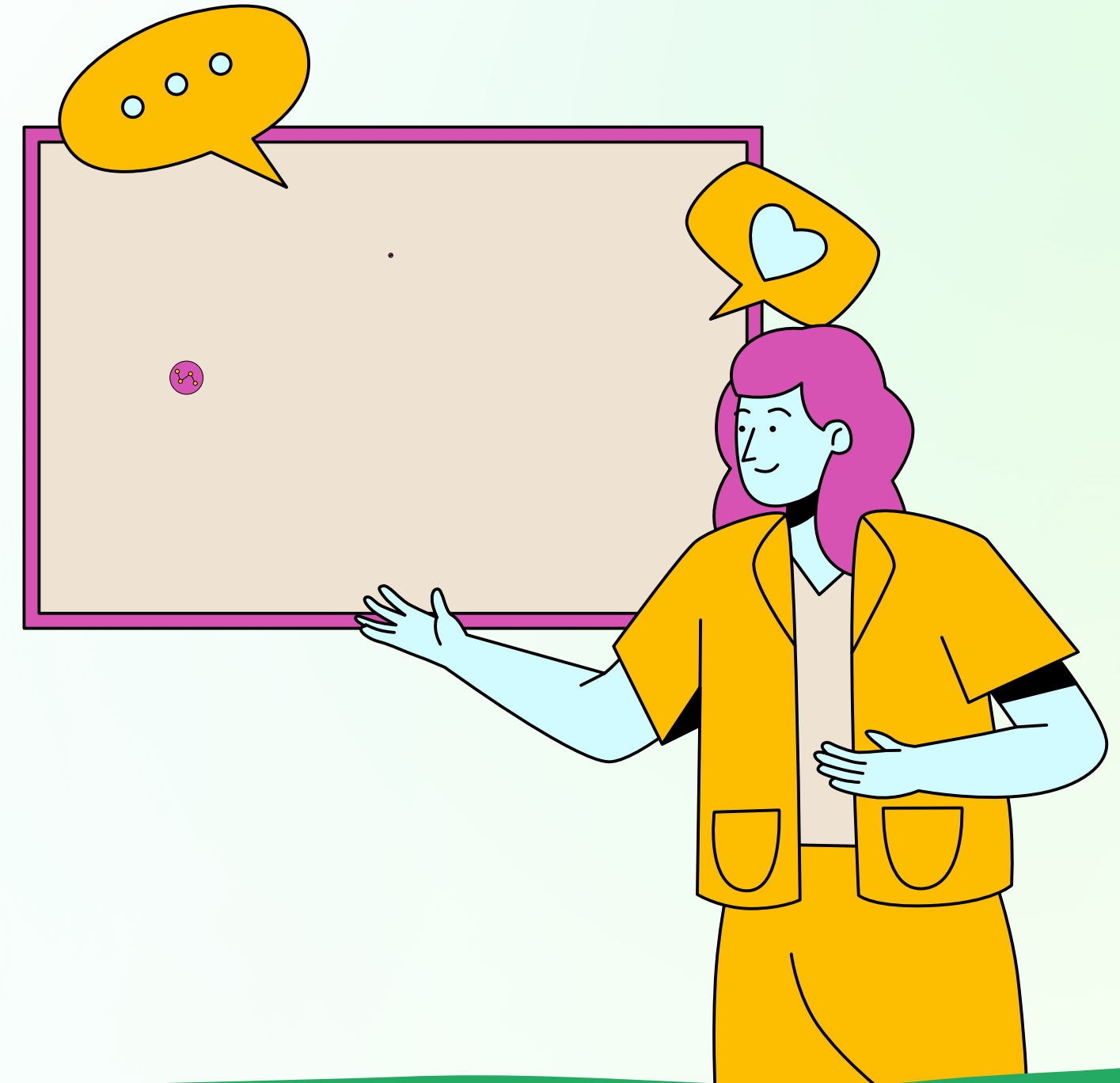


“The fact that you took into consideration the Francophone dimension and that you got [a French-speaking KH staff person] involved, well that was very useful... you made it more inclusive and people who speak French are able to play a bigger role”

“[I’ve] greatly expanded my knowledge and [my participation has] allowed me to grow. I came into this community of practice, not an expert in trauma and violence-informed work... the Community of practice has been incredibly informative.”

MEET ANGEL

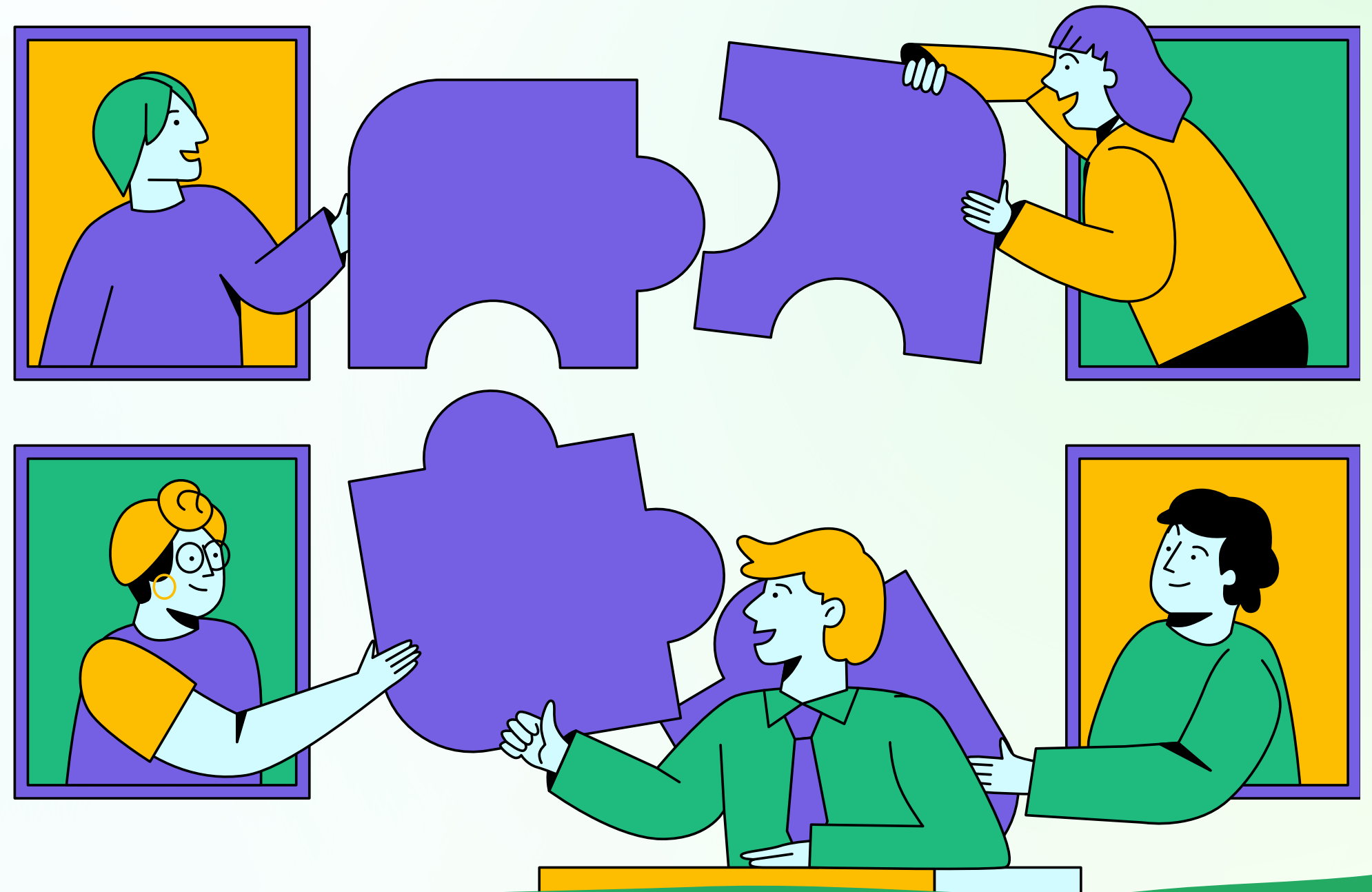
Meet CoP member Angel, whose work focuses on sexual violence prevention with children. Recently, Angel presented her research as part of the Learning Network and Knowledge Hub Webinar Series, reaching a broad audience and sharing her insights and progress. Angel has found invaluable support from the KH team, who visited her workplace to build a relationship and gain a deep understanding of her project. This collaboration has led to impactful knowledge mobilization materials and opportunities. With the Knowledge Hub's guidance, Angel has expanded her project's reach, turning her research into real community impact.



"...People feel comfortable and welcome. And I appreciate that immensely. And I recognize that with the rest of the team also that when we're online or doing something that they have a vested interest in your programs, but also you yourself as a person who's part of that community of practice."

CONCLUSION

The Knowledge Hub's CoP has cultivated an inclusive and supportive network of research and service professionals from across Canada. Each member's work is strengthened through shared experiences, learning, and collaboration. Together, this interconnected community is working collectively to advance trauma- and violence-informed health promotion research and practice.



"Having the chance to meet together... is especially important to keep us all thinking about each other and thinking about the work and what our common challenges are and what our common successes are. And for me it's really important that we have both your ongoing educational work happening that others benefit from as well as those of us directly in the community, but also to really strengthen us as a group."